

# Towanda Hat & Headband

(for those *Idgie Threadgoode* days,  
of which there are many)

by Cindy Walker



## Stuff About the Pattern

**Sizes:** Bad to the Bone Baby, Wild Child, Awesome Women-medium and large.

**Yarn:** 2 - 1 oz/120 yds Pacolet Valley Heather or Southern Bales Fingering Baby Cakes: directions refer to 1 solid & 1 long run color-way (model top right: Warm Sands Long Run + Violet Blue Solid) but you can also use: 2 solids, 1 solid & 1 variegated, or lots of different colors of fingering weight yarn. *Making sure to have enough contrast between foreground and background is essential to having the designs show up and stand out.* It takes 2 ounces/240 yards to complete. If you like, the dotted chart (page 4) can be an can be colored in (adult beverages help) before knitting...or not.

The only goal is not to go insane.

**Charts:** dotted charts, shaded charts, colored charts are intended to help you “see” the patterns, find the one that works for you.

**Needles:** size 2/ 16 in circular, size 2 double pointed (dpn)

**Gauge:** 8.5 stitches to the inch, 9 rows to the inch ... *this is all relative to your tension, state of mind, political party, presence of children, etc.*

**Know How:** The technique of stranded knitting is *addicting* used in this pattern. To help with this, if you like, we have: 1 minute, two hands, no cats or strolls around the property, straight up “show me how” videos here:

<http://www.stonyhillfiberarts.com/KnittingVideos.html>

Copyright 2017 Cynthia Walker—All rights reserved

[www.stonyhillfiberarts.com](http://www.stonyhillfiberarts.com)

828 817-3096

Most days, these days, I find myself in one of two positions: fetal or fighting. Both are exhausting...  
 Knitting calls me in from the ledge. I wish for you many peaceful and strengthening hours with this project. I love to think of all of you kick ass women knitting away. Onward.

**Definitions:**

- k-knit, p-purl, k2tog - knit two stitches together
- inc1 - knit into the front and back of the same stitch
- rep @ - repeat around
- wtf - turn off the news

**Color Chart**  
 (like sample on top right on front page)

- = Solid Color  
(or \_\_\_\_\_ color)
- = Long Run  
(or \_\_\_\_\_ color)

**Cast On & Hat Ribbing:**

With ● Cast On 128 (136, 144, 152) sts.

Join in the round.

Round 1. With ●, purl 1 round.

Round 2-7. p2 with ●, k2 with □ for 6 rounds.

Round 8. With ●, knit 1 round.

Round 9. For each size as follows.

**Baby:** With ●, k9, k2tog-1x only,\*k8, inc1; \*rep @ - 140 st.

**Child:** With ●, k10 then \*k6, inc1; \*rep @ - 154 st.

**Medium:** with ●, \*k5, inc1; \*rep @ - 168 sts.

**Large:** with ●, \*k5, inc1-\*rep 2x's only, then \*k4, inc1; \*rep around - 182 sts.)

**Towanda Chart** (to make a headband, see page 3)

**Baby:** Round 10-32. **Child:** Round 10-39.

**Medium & Large:** Round 10-42.

**Colorful Crown**

**Baby:** with □, knit 1 round - 140 st. (Round 33)

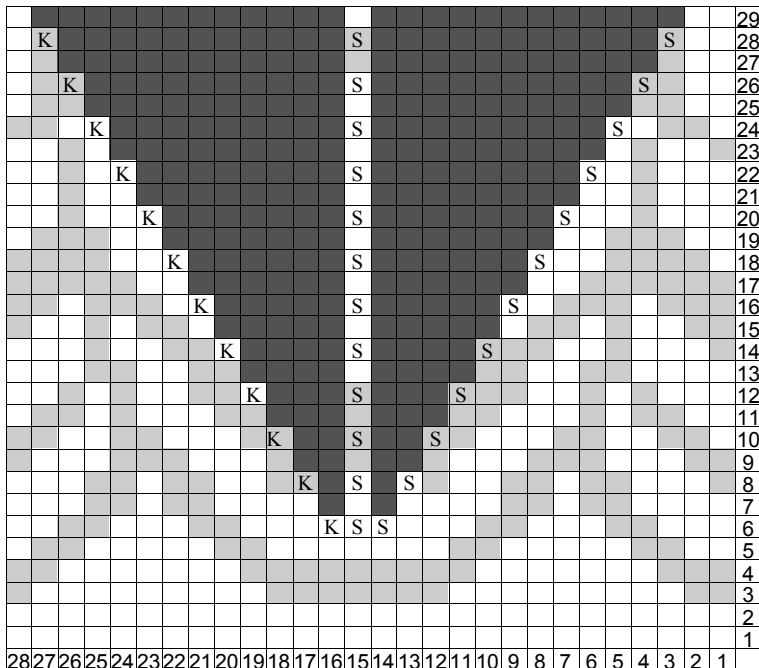
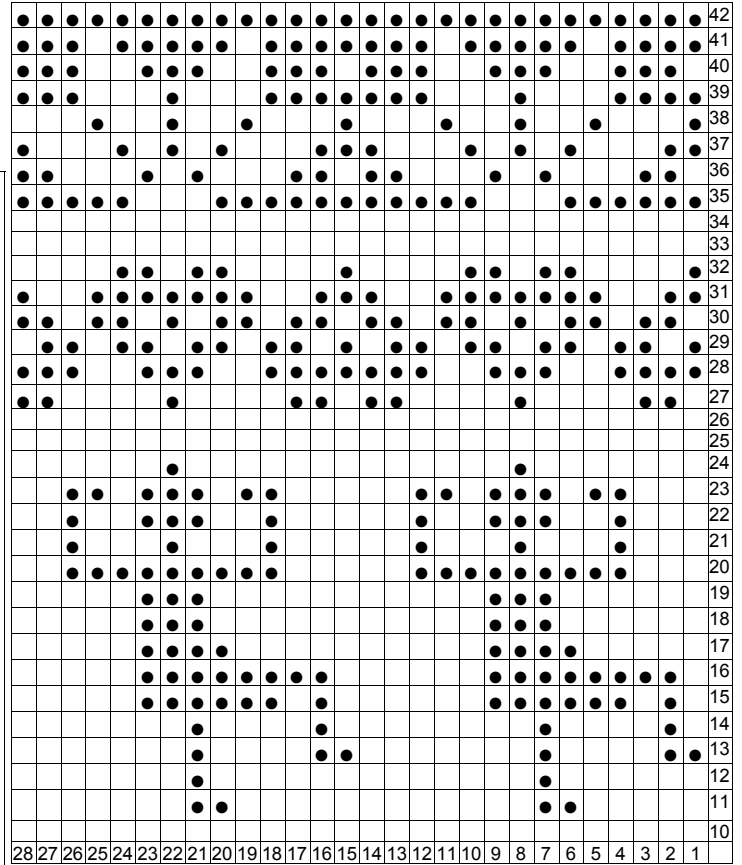
**Child:** with □, k9, k2tog; \*rep@ - 140 st. (Round 40)

**Medium:** with □, knit 1 round - 168 st. (Round 43)

**Large:** with □, \*k 11, k2tog; \*rep @ - 168 st. (Round 43)

**Proceed to Colorful Crown Chart below 1-28.**

Round 29. \*k2tog; \*rep @ 30. Cut yarn and pull thru loops.



**Colorful Crown**

The crown is created by following the chart while performing a sequence of double decreases on every odd numbered round. Place a marker every 28 stitches to help you identify each sequence. The dark gray boxes in the chart represent the areas where the stitches have “disappeared” due to the decreases. The light gray boxes represent one color and the blank boxes another. You choose. I used the long run color-way for the blank boxes and the solid for the gray boxes on the gold and blue hat and all of the colors: pink, brown, blue, purple, & golden brown for the others.

Beginning with round 5, you will knit in charted pattern to center 3 stitches then S2KP (sl 2, k1, p2sso).

**S2KP (sl2, k1, p2sso) Basic Double Decrease:**  
 slip two *as if to knit two together* - marked “s”,  
 knit the next stitch in color charted - marked “k”,  
 then pass two slip stitches over the knit stitch.

**Finishing Up**

Sew in loose ends. Try it on, flex muscles, & march around. You can wet your hat and place it flat on a towel so that the top lays flat. Try not to stretch it out too much, if using cotton-and it doesn't have the memory (who can relate?) of wool.

If blowing your top is not an issue...You can make the hat a headband for a quicker *fix* project. I made it in the adult sizes only, feel free to adapt for the little ones if you like...

You will need a total of 1 oz / 120 yd fingering weight yarn.

**Just a Headband:** For Adults

Follow hat directions through round 7.

Round 8. With □, knit 1 round.

Round 9. For each size as follows.

**Medium:** with □, \*k5, inc1; \*rep @ - 68 sts.

**Large:** with □, \*k5, inc1-\*rep 2x's only, then \*k4, inc1; \*rep around - 182 sts.)

**Towanda Chart**

**All sizes:** Round 10-25.

Round 26. As Follows:

**Medium:** with ●, \*k5, k2tog; \*rep @ - 144 st.

**Large:** with ●, k2, then \*k 4, k2tog; \*rep @ - 152 st.

Round 27-32. p2 with ●, k2 with □ for 6 rounds.

Round 33. with ●, \*p2, k2, p2, k2, p2, k2tog; \*rep @

Round 34. with ●, bind off purlwise.

Sew in loose ends, put it on, feel the power surge.

**Color Chart**

● = Solid Color (or \_\_\_\_\_ color)

□ = Long Run (or \_\_\_\_\_ color)

																																	25		
																																		24	
																																		23	
																																			22
																																			21
																																			20
																																			19
																																			18
																																			17
																																			16
																																			15
																																			14
																																			13
																																			12
																																			11
																																			10
28	27	26	25	24	23	22	21	20	19	18	17	16	15	14	13	12	11	10	9	8	7	6	5	4	3	2	1								

Possible Color Combos: Long Run Color Way & Solid



Warm Sands & Violet Blue



Cool Greens & Baby Pink



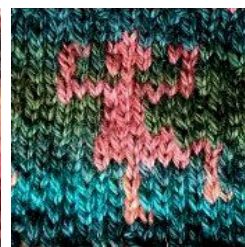
Cool Seas & Golden Brown



Cool Shannah & Light Lilac



Pinks & Dark Green



Cool Greens & Terra Cotta



**Five Solids**

Baby Pink, Chocolate Brown, Golden Brown, Turquoise, Periwinkle. This is enough to make 2- 3 hats depending upon sizes.

The chart on the left is for you to color in, the chart on the right is for reference. Fair Isle typically uses just two different colors in one row. Contrast is key.

